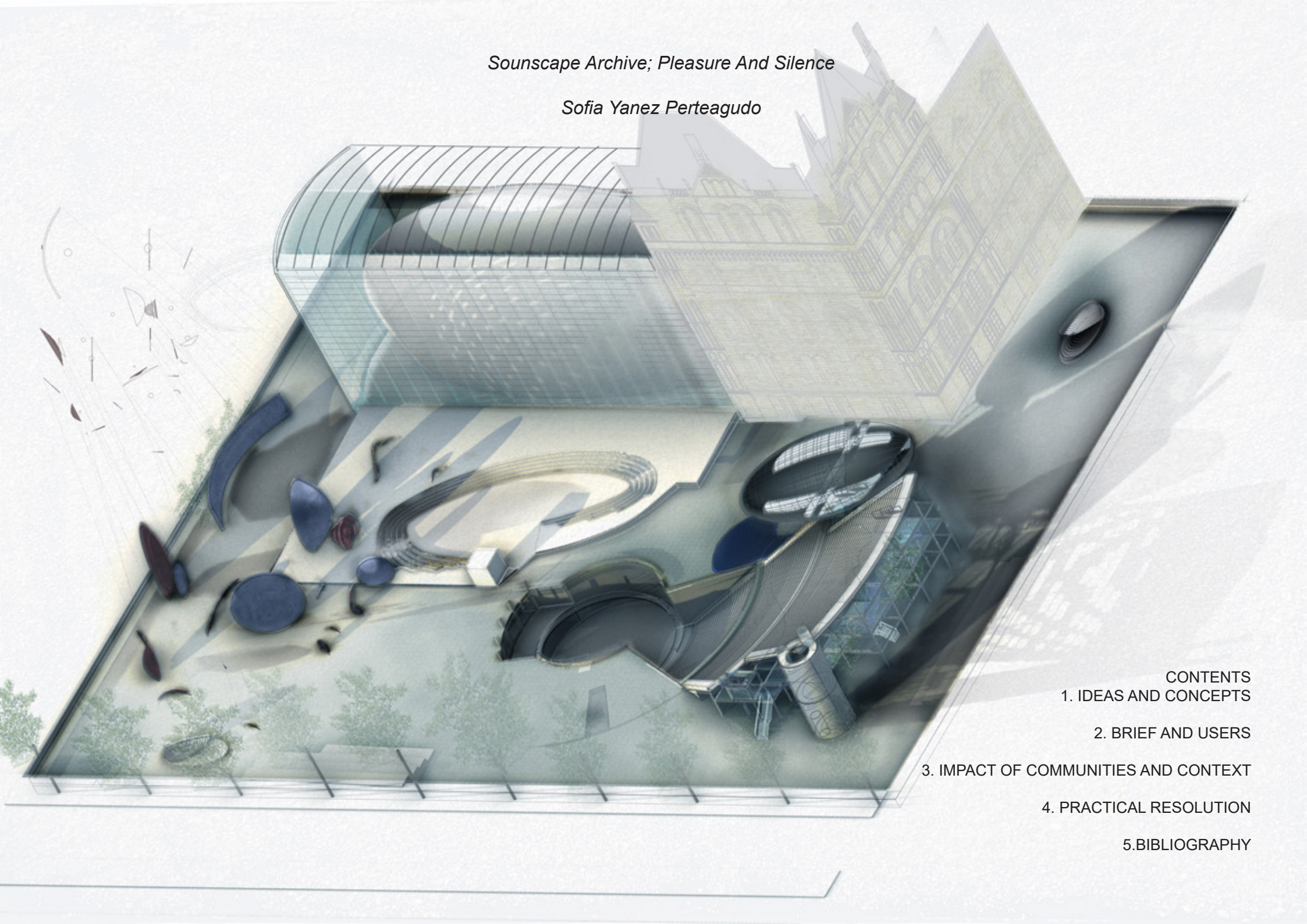


*Soundscape Archive; Pleasure And Silence*

*Sofia Yanez Perteagudo*



CONTENTS

1. IDEAS AND CONCEPTS

2. BRIEF AND USERS

3. IMPACT OF COMMUNITIES AND CONTEXT

4. PRACTICAL RESOLUTION

5. BIBLIOGRAPHY



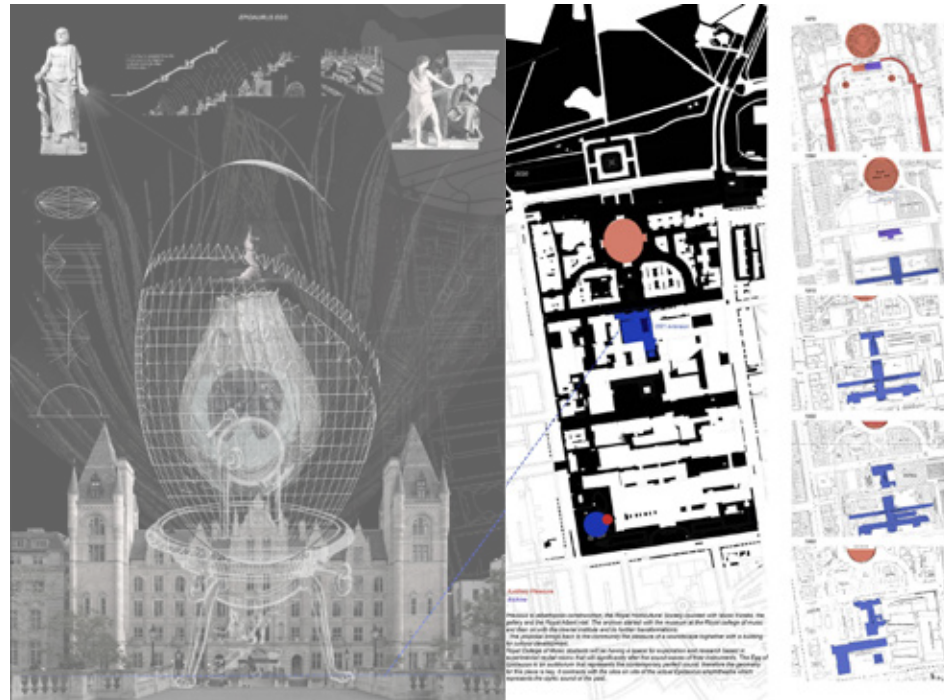
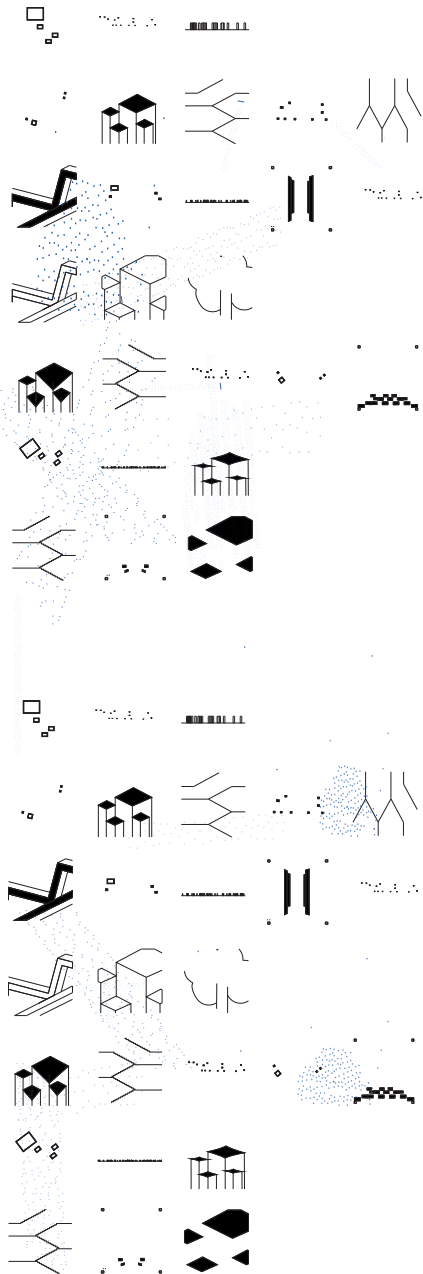
The urban pleasure garden is defined through a soundscape where visual and auditory experiences engages the user with the introduction of sound into architectural design. The archive building located beneath the landscape consists of a research centre for musicians and students from the Royal College of Music.

The differences between the senses of sight and sound is described through all elements of the project. The sound mirrors visually reflect the surroundings with sectional profiles that reveal the physics behind the sound making. The amphitheatre, modelled at true scale to the original Epidaurus in Greece, is seen as an expression of perfect sound while the said perfect auditory qualities are experienced through an auditorium located alongside this visual representation. Additional and ancillary facilities whether programmatic, circulatory and/or experiential are all designed to enhance the understanding of sound in relation to different spatial forms.



# 1. CONCEPTS / ARCHITECTURAL IDEAS

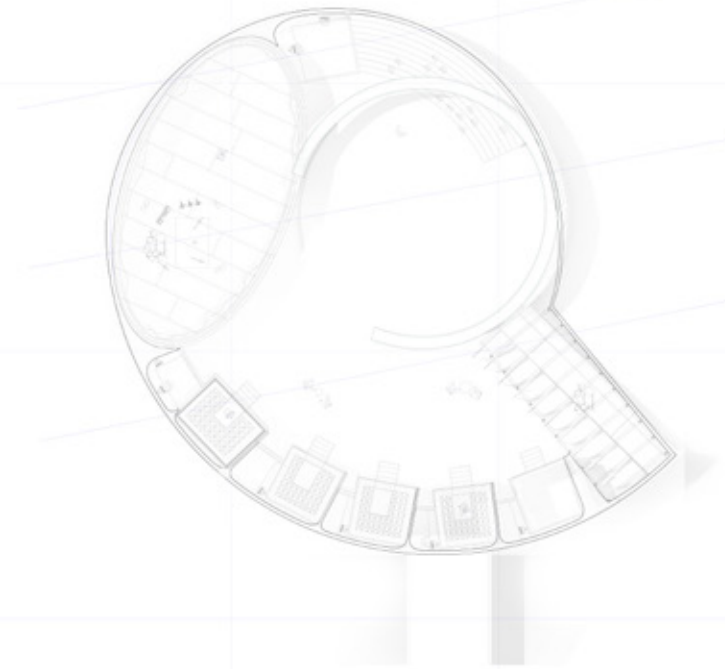
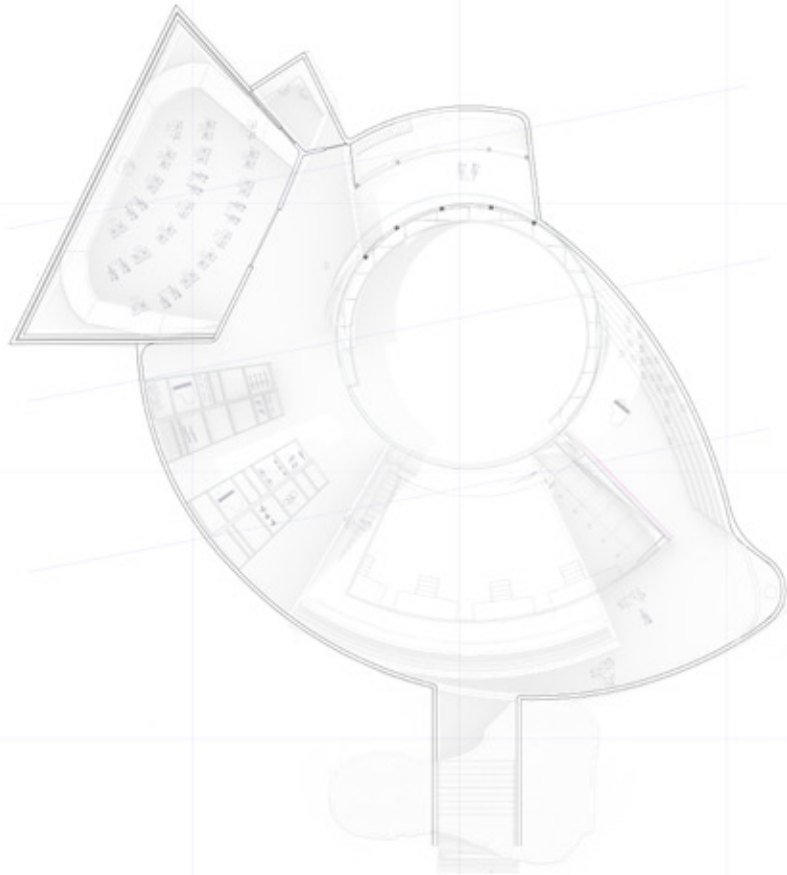
My project is a Sound Research centre, located on the Natural History Museum. This is my interpretation and reading of an urban pleasure garden because it incorporates an auditory landscape in which the community can enjoy and discover the architectural transcriptions of the site's sounds. It exposes all the sound categories established as architectural typologies and the influence of sound mechanics and music theory on them.



- Silence vs Pleasure*
- Duration vs Time*
- Context vs Distance*
- structural division vs Temporal division*
- Construction vs Demolition*
- Immersion vs Distance*
- Sound vs Visual*
- Passive vs Composed*
- Notation vs Composition*
- Composition vs Alienation*
- Impression vs Presence*
- Notation vs Representation*
- missing tools*
- Sound vs Landscape*
- Imagine vs See*
- Sound Specific Landscape*

## 2. BRIEF AND USERS

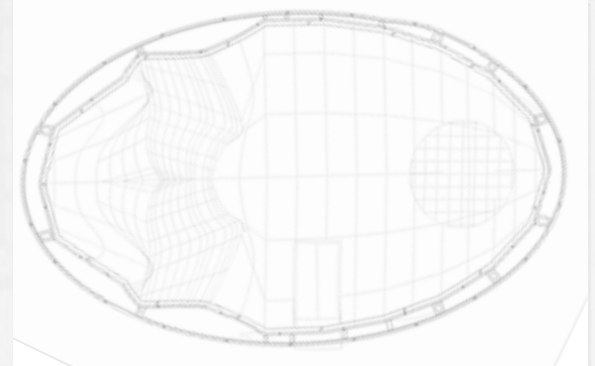
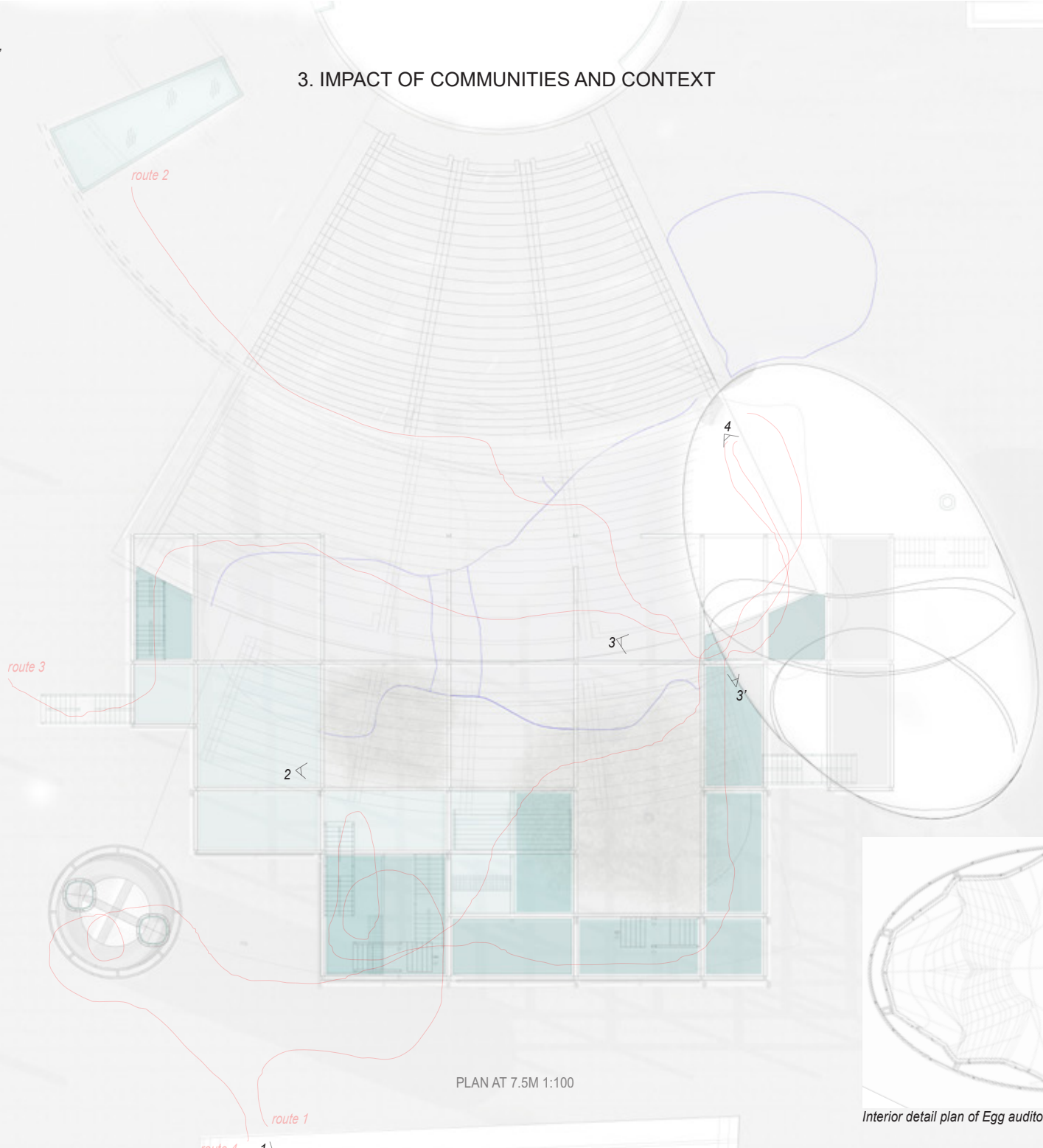
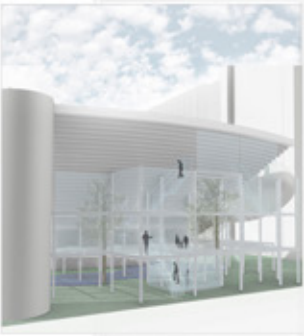
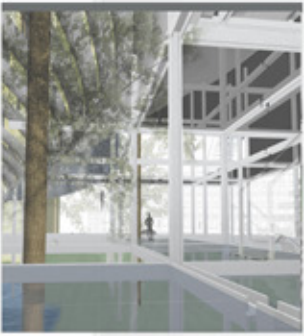
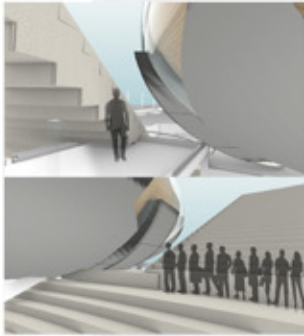
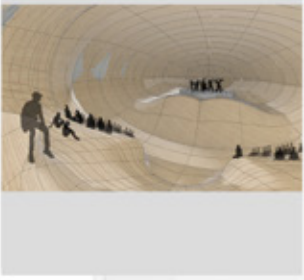
Royal College of Music. The college across the road, is currently going through a renovation from which they will get recital rooms, museum and theatre. Soundscape archive will offer them a total different educational experience and facilities. Epidaurus egg is a present for them that explores the perfect sound acoustically, in contrast with the amphitheatre that explores it visually.





"Attending a show at the Egg auditorium Journey"

### 3. IMPACT OF COMMUNITIES AND CONTEXT

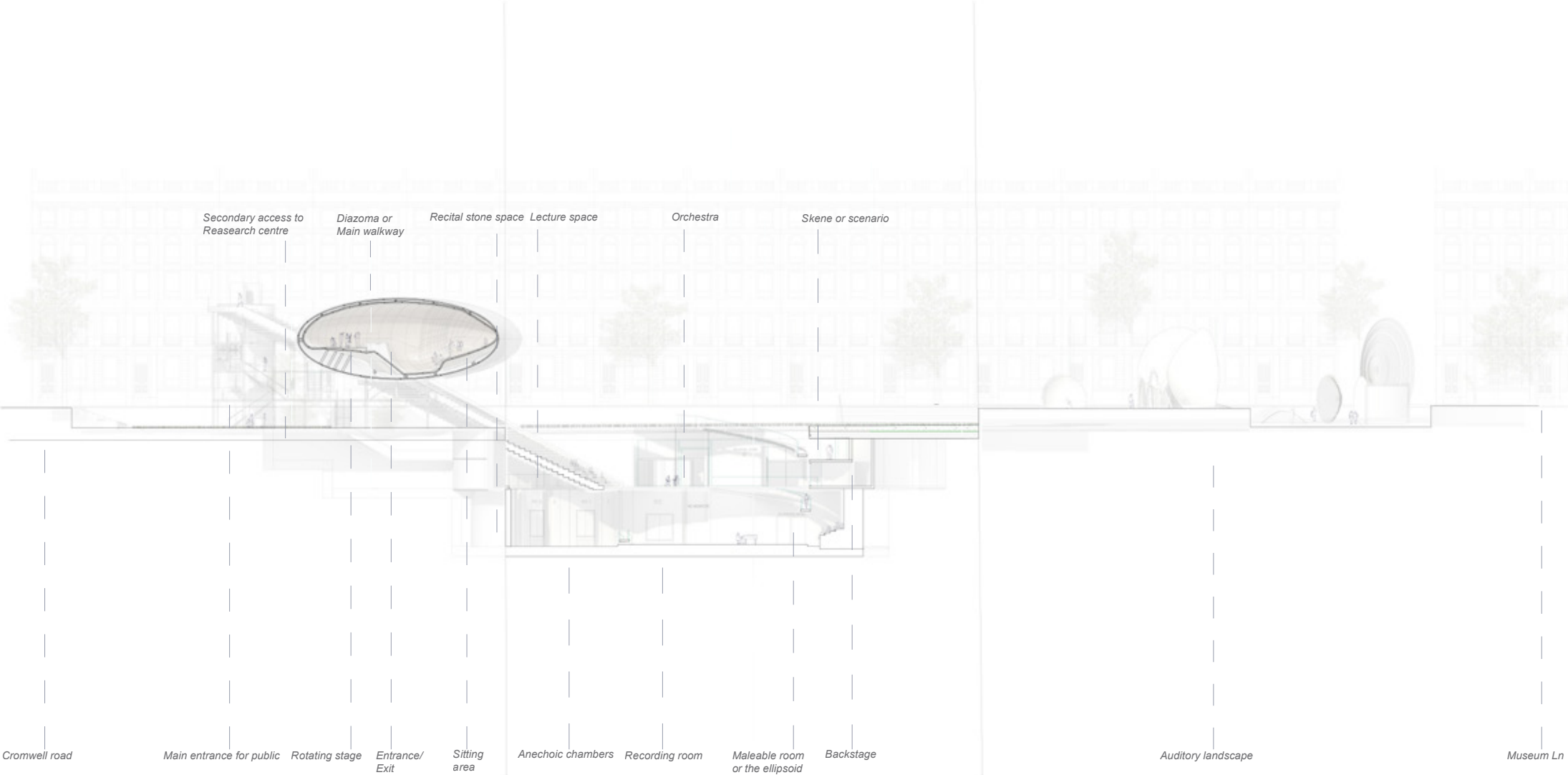


Interior detail plan of Egg auditorium

1:100

4. PRACTICAL RESOLUTION

The many elements come together to form one building, the Soundscape archive integrates spaces such as:



## 5.BIBLIOGRAPHY

- Darran Andersen, Imaginary cities
- John cage, Silence: Lectures and Writings
- Images of sound, Javier Ariza
- Branden W. Joseph, John Cage and the Architecture of Silence
- La Balza, quindinciale futurista
- Smithsonian Mag ,5 1/2 Examples of Experimental Music Notation
- The soundscape as time capsule: A creative project based on the sounds of the first train station of Cuenca, Javier Ariza.
- Synaesthesia in graphic notation: visual language for sound representation, Marina Corral.
- David Buck, A Musicology for Landscape
- David Buck, Drawing Sound as Landscape
- Busoni, Ferruccio, A New Aesthetic of Music, N.Y. 1911
- Nico F Declercq and Cindy S. A. Dekeyser, Acoustic diffraction effects at the Hellenistic amphitheater of Epidaurus: Seat rows responsible for the marvelous acoustic.

